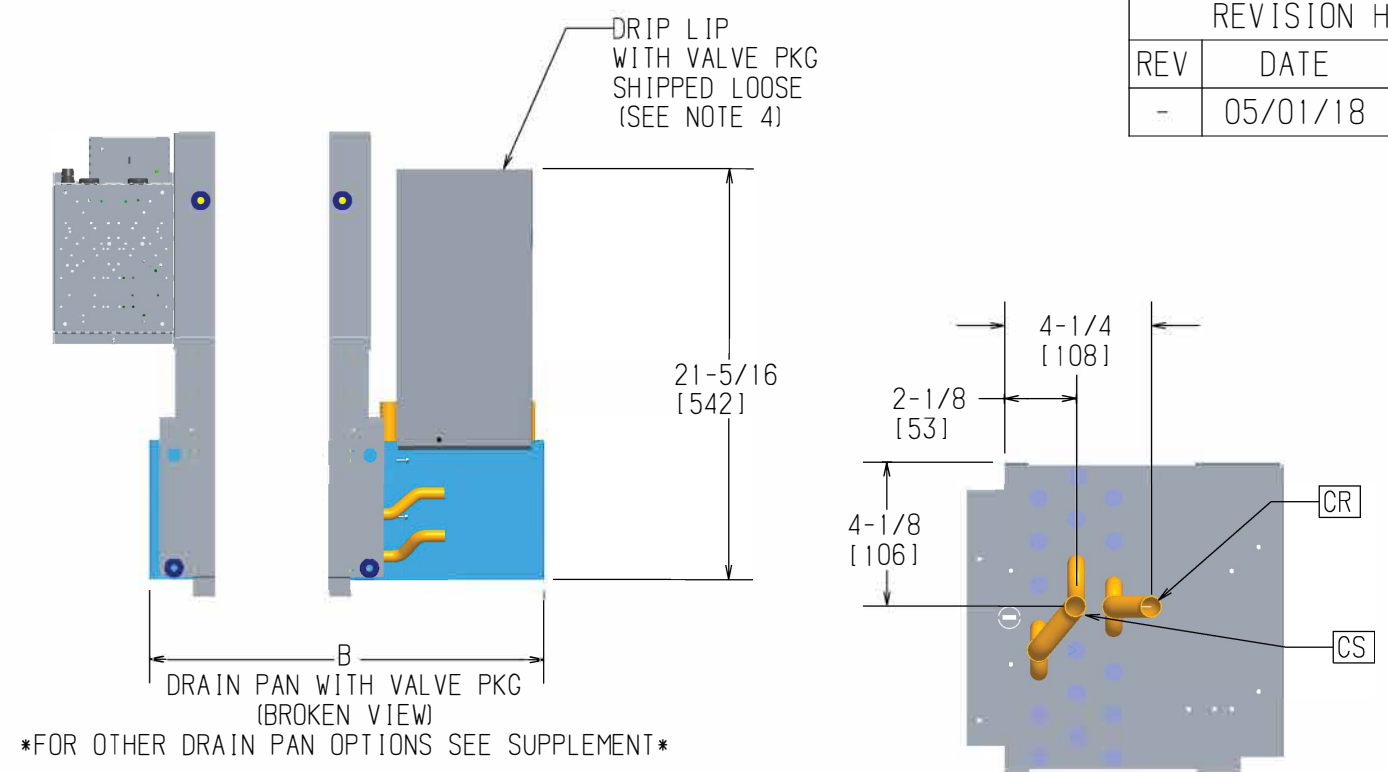


- NOTES:
1. RH SHOWN, LH OPPOSITE.
  2. ALL DIMENSIONS ARE +/- .25 (6). DRAWING NOT TO SCALE.
  3. PRODUCT SPECIFICATIONS ARE SUBJECT TO CHANGE WITHOUT NOTICE.
  4. DRIP LIP RECOMMENDED. PROVIDED WHEN VALVE PKG IS ORDERED.
  5. CONTROL BOX SIZE AND POSITION MAY VARY (CONSULT FACTORY)
  6. POSITION MAY VARY.
  7. SERVICE ENTRANCE IS LOCATED ON THE REAR OF THE CONTROL BOX WITH KNOCKOUTS.
  8. UNITS WITHOUT SERVICE SWITCH USE THE KNOCKOUTS ON THE REAR SIDE OF THE CONTROL BOX.
  9. TYPICAL SIZE 06 UNIT SHOWN WITH 1-MOTOR AND 2-BLWR - REFER TO TABLE FOR VARIATION.
  10. SEE VALVE PACKAGE SUPPLEMENTAL FOR PIPING TERMINATION.

Unit Model	Dimensions - Inches (Millimeters)										Quantity/Unit	
	A	B	C	E	F	G	H	J	K		BLWR	MOTOR
CPY 02	21-1/4 (540)	28-1/2 (724)	16 (406)	18-1/4 (464)	6-1/4 (159)	8-3/4 (222)	19-3/4 (502)	38 (965)	15-3/8 (391)		1	1
CPY 03	25-1/4 (641)	32-1/2 (826)	20 (508)	22-1/4 (565)	6-1/4 (159)	8-3/4 (222)	23-3/4 (603)	38 (965)	19-3/8 (493)		1	1
CPY 04	31-1/4 (794)	38-1/2 (978)	26 (660)	28-1/4 (718)	6-1/4 (159)	8-3/4 (222)	29-3/4 (756)	38 (965)	25-3/8 (654)		2	1
CPY 06	36-1/4 (921)	43-1/5 (1105)	31 (787)	33-1/4 (845)	7-1/2 (191)	10 (254)	34-3/4 (883)	38 (965)	30-3/8 (772)		2	1
CPY 08	43-1/4 (1099)	50-1/2 (1283)	38 (965)	40-1/4 (1022)	7-1/2 (191)	10 (254)	41-3/4 (1060)	38 (965)	37-3/8 (950)		2	1
CPY 10	57-1/4 (1454)	64-1/2 (1638)	52 (1321)	54-1/4 (1378)	7-1/2 (191)	10 (254)	55-3/4 (1416)	60 (1524)	51-3/8 (1306)		4	2
CPY 12	65-1/4 (1657)	72-1/2 (1842)	60 (1524)	62-1/4 (1581)	7-1/2 (191)	10 (254)	63-3/4 (1619)	65 (1651)	59-3/8 (1509)		4	2



REVISION HISTORY		
REV	DATE	ECN
-	05/01/18	18-0608

TITLE

CPY HORIZONTAL HIDEAWAY W/PLENUM W/ELEC HEAT

DWG NO

**1100-90041392**

REV

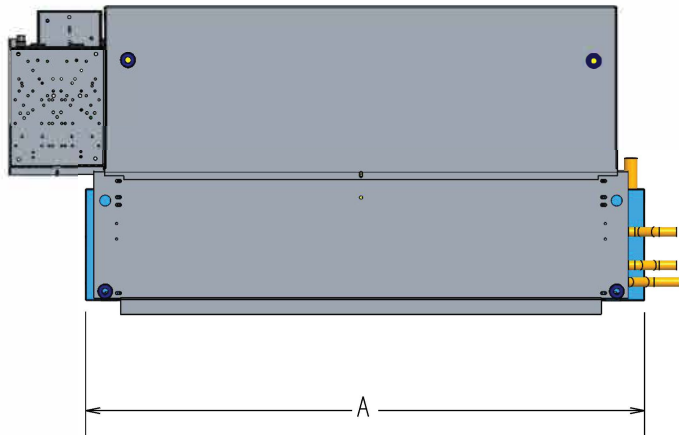
-

DRAWN	DATE	APPROVED	DATE
K.Lietz	01/31/20	S.STOTTS	01/31/20

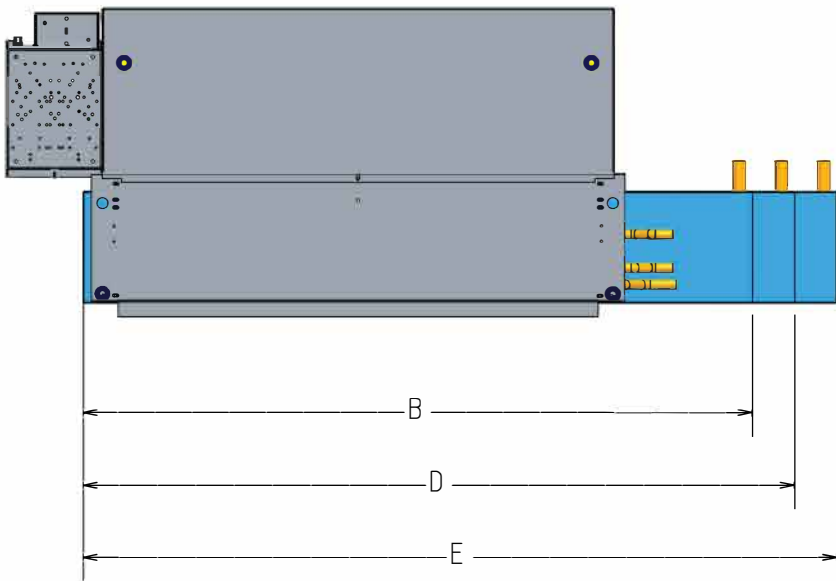
REVISION HISTORY		
REV	DATE	ECN
-	05/01/18	18-0608

Unit Model	Dimensions - Inches (Millimeters)				
	A	B	C	D	E
	STANDARD CHY/CPY	EXTENDED CHY/CPY (+10")	STANDARD CBY	STANDARD CXB (7.25") STANDARD CPY W/VLV PKG	CPY SAME SIDE PIPING/CNTRL W/VLV PKG (+12.75")
C** 02	21 1/4 (540)	31 1/4 (794)	30 1/2 (775)	28 1/2 (724)	34 (864)
C** 03	25 1/4 (641)	35 1/4 (895)	30 1/2 (775)	32 1/2 (826)	38 (965)
C** 04	31 1/4 (794)	41 1/4 (1048)	36 1/2 (927)	38 1/2 (826)	44 (1118)
C** 06	36 1/4 (921)	46 1/4 (1175)	48 1/2 (1232)	43 1/2 (1105)	49 (1245)
C** 08	43 1/4 (1099)	53 1/4 (1353)	48 1/2 (1232)	50 1/2 (1283)	56 (1422)
C** 10	57-1/4 (1454)	67 1/4 (1708)	70 1/2 (1790)	64 1/2 (1638)	70 (1778)
C** 12	65-1/4 (1657)	75 1/4 (1911)	70 1/2 (1790)	72 1/2 (1842)	78 (1981)

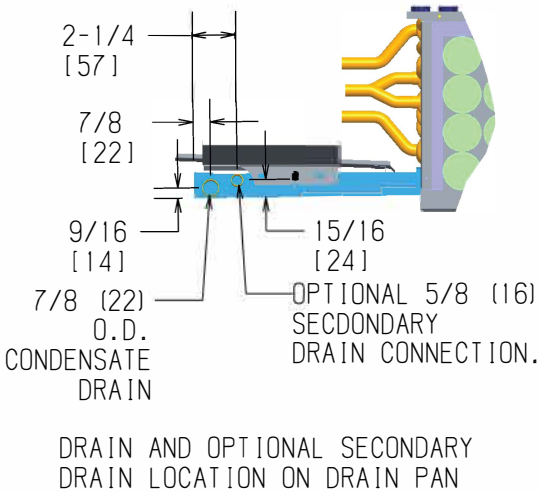
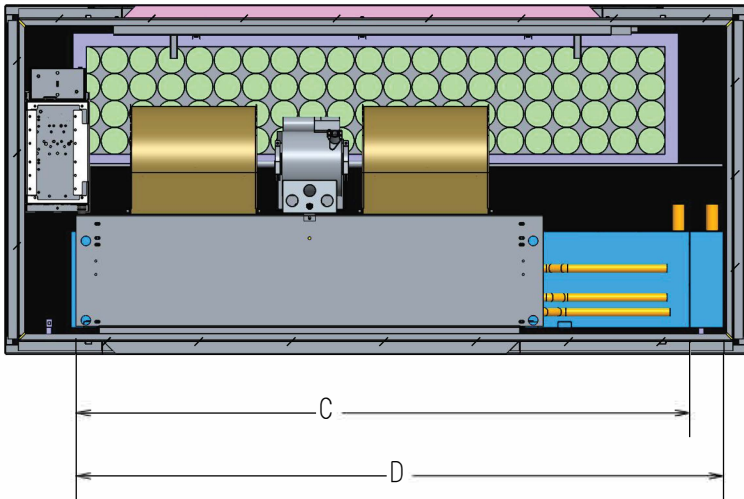
STANDARD CHY/CPY




EXTENDED CHY/CPY (B)  
CPY WITH VALVE PACKAGE (D)  
CPY WITY SAME SIDE PIPING AND CONTROLS (E)



STANDARD CBY/CXB



			
TITLE DRAIN PAN SUPPLEMENT			
DWG NO 1100-90041825			REV -
DRAWN J. FUSON	DATE 2/13/20	APPROVED S.STOTTS	DATE 2/13/20